

2024 8 16 8 120

Volume 16 Number 8 August 2024

1605  
1605

ISSN 1674-6929





# 中国科技核心期刊

CHINA SCIENCE & TECHNOLOGY CORE JOURNALS

## 收录证书

CERTIFICATE OF SOURCE JOURNAL

FOR CHINESE SCIENTIFIC AND TECHNICAL PAPERS AND CITATIONS

“ ”

Institute of Science and Technical Information of China

北京复兴路 15 号 100038 [www.istic.ac.cn](http://www.istic.ac.cn)

2023年9月

证书编号：2022-G556-1223

有效期至：2024年12月

# 分子诊断与治疗杂志

##  
##  
%-% %-%  
##  
%-% %-%  
##

##

##

%%



扫码订购《分子诊断与治疗杂志》

# 分子诊断与治疗杂志

2024 8 16 8

~~~~~ " \$\* &

9d!\* 46C 27A E246 ~~~~~ " \$\*\*  
A>D# >E2" G42> "

~~~~~ "% \$  
A4E

~~~~~ "% (  
@A? 787#\$

~~~~~ "% #  
(\$%& 9AG ~~~~~ "%'

7E\$ 7E% C4

~~~~~ "%#!  
Ac 8CA 42#%# A4E 9a

~~~~~ "%#&  
? =C A=C ~~~~~ "%#\*  
?E ac 3?A 2\_X ?6

~~~~~ "%\$\$  
:G7 6E 7D9 6# =9

~~~~~ "%\$(  
E<: ..... "%%'  
22AC ~~~~~ "%%&

~~~~~ "%%\*  
4`c 6 ?2 ~~~~~ "%%&%  
?D6 := " & 9E

~~~~~ "%%&  
^E@C

~~~~~ "% \$  
? =CA\$

~~~~~ "% (  
:= ' := # E

~~~~~ "%( #  
@A? 4CA C2? <= ~~~~~ "%'  
=4C 92=A

~~~~~ "%!<br>dEC6> " 2BA&

~~~~~ "%%</p></div>

9AG E4E

~~~~~

"%)

~~~~~

"%\$

E445 @? D5

2A2496

~~~~~

"%(

42C G687 :? := "(

~~~~~

"& #

~~~~~

"&'

A4E D22 EdX

~~~~~

"&"

d=@l " DC63A " dDE#

~~~~~

"&" &

:= ' 4CA 9Tj 242

~~~~~

"&#!

D4 #C :? ED87

~~~~~

"&#%

:= " d6 TRJ 6#

~~~~~

"&#\*

D2==% 8D 9DA(!

~~~~~

"&\$ \$

~~~~~

"&\$ (

~~~~~

"&%"

D22 9> 83" E?7

~~~~~

"&%"

~~~~~

"&&!

7:3 C3A ?28 EC7

~~~~~

"&&&

2> A<ž^ E@C

~~~~~

"&&\*

?7 3 A4E := "

~~~~~

"& %

E=C% ?7 3

~~~~~

"&' )

" \* # " 2=: A=C

~~~~~

"& ( \$

:= ) A4E Yd4CA

~~~~~

"& ( (

?AHE

> > A#

E>A" G687

~~~~~

"& ) #

~~~~~

**COMMENTS**

Advances in laboratory diagnostic studies of brucellosis

.....

**ORIGINAL ARTICLES**

Predictive value of Hsp90 CER and AFP for the curative effect of TACE in patients with primary liver cancer

.....

The role of PMS2 MTA1 and VCAM 1 in the evaluation of colon cancer and prognosis

.....

E ffect of self shaping catheter intubation on levels of Cor E and NA in infants with premature closure of cranial suture  
.....

Changes of serum NSE IL 1 and 5 HT levels in patients with chronic insomnia disorder and relationship with  
cognitive function and sleep  
.....

E ffects of exercise rehabilitation intervention on cardiac function autophagy and mTOR pathway of patients  
with chronic heart failure  
.....

E ffect of semaglutide on elderly diabetic nephropathy and its effect on NLRP3 inflammasome pathway  
.....

E ffect of remifentanil combined anaesthesia on serum IL 6 IL 2 and T lymphocyte subsets in patients undergoing  
laparoscopic cholecystectomy  
.....

Relationship between OPN CRP and RANKL levels in gingival crevicular fluid and peri implant inflammation  
.....

E fficacy of preoperative lymphocyte/C reactive protein ratio combined with HALP score in the prognosis of cases  
with persistent atrial fibrillation undergoing radiofrequency ablation  
.....

S tudy on the predictive value of serum markers sTREM 1 and AQP5 for infectious endophthalmitis after cataract  
surgery  
.....

A nalysis of HPV infection and TCT results in women with health examination in a tertiary hospital in Beijing  
.....

C haracterization of gene mutations in deafness patients of Han and Mongolian ethnicities in Inner Mongolia  
.....

T he value of TCCD and ONSD on blood biochemical indexes APACHE score and prognosis of cerebral  
resuscitation patients  
.....

E ffects of Jianpi Runfei Pills on levels of CAR VEGF IFN and IL 17 in patients with pulmonary tuberculosis  
.....

A nalyze the influencing factors of autologous hematopoietic stem cell mobilization in patients with multiple myeloma  
.....

T he value of PCT SAA and Treg factor assays in the antimicrobial treatment of multidrug resistant bacterial  
infections  
.....

C hanges of sLOX 1 sST2 and SREBP 1 in patients with coronary heart disease and their relationship with the  
severity of coronary lesions  
.....

A nalysis of IL 6 CRP Hcy ACA and prognosis of patients with acute cerebral infarction  
.....

E ffect of neoadjuvant chemotherapy combined with immunotherapy on locally advanced esophageal cancer and  
its influence on Sil 2R IFN and TSGF levels  
.....

T he significance of serum IL 1 sE cad E2 combined with breast ultrasound in the differential diagnosis of  
plasma cell mastitis and breast cancer  
.....

Expression of SALL4 GS and HSP70 in hepatocellular carcinoma tissues and its clinical value in early screening  
.....

Risk factors of cognitive impairment and predictive value of serological indexes in patients with schizophrenia  
.....

Correlation between *TNFSF15* gene polymorphism and its related protein and primary biliary cholangitis  
.....

Relationship between serum SAA HMGB1 TNF expression and disease activity in patients with ankylosing  
spondylitis  
.....

Efficacy of butylphthaloin combined with E daravone dextrocamphorol in the treatment of arteriolar occlusion  
type stroke  
.....

Correlation between serum FIB urine RBP NAG TRF and pathological grade of kidney in children with purpura  
nephritis  
.....

Correlation between AMPK/mTOR activation and epithelial cell injury in chronic nasosinusitis  
.....

Influencing factors of intracranial infection and predictive value of NF B PCT and IL 1 in cerebrospinal fluid  
after external ventricular drainage  
.....

E ffect of Huangqi Yishen Granules combined with sevelamer on TLR4 and NF B in patients with maintenance  
hemodialysis  
.....

Expression and prognostic value of tumor markers cytokeratin 19 fragment antigen 21 1 ALI and PLR in  
non small cell lung adenocarcinoma  
.....

Efficacy of Zhenwu decoction on patients with chronic pulmonary heart disease and influence on levels of IL 8  
PCT and hs CRP  
.....

Clinical efficacy of NPWT combined with silver ion dressing in elderly male diabetic toe osteomyelitis and its  
effect on MMP 2 TMP 1 and VEGF  
.....

The relationship between 1q21 amplification serum IL 21 lactate dehydrogenase and efficacy and prognosis of  
patients with multiple myeloma  
.....

The levels and clinical significance of serum lncRNA PVT1 and HIF 1 in patients with endometriosis  
.....

Correlation between PDK1 expression in peripheral blood and inflammatory response in patients with chronic  
heart failure and its clinical significance  
.....

## REVIEWS

The introduction of methods of bioinformatics analysis and Cut off value determination on pathogen metagenome  
Sequencing reagent  
.....

The main function of HSD17B6 and its role in endocrine metabolism and tumors  
.....

aa

J

2

2.1

3.2

2.2

3.3

4

3

4.1

3.1

4.1.1

,

,

,

—

4.1.2

5

4.2

4.3





1 2

**aaaaa k**

---

AHWJ2021a075

1. 236400  
2. 236000

E mail y1328963@163.com

1

1.1

1.2

1.3

1.4

-

2

2.1

2.2

2.3



U•

---

v

UÀ Uñ% U•U• 4

U•U•

% \*



aaaaa b

---

OFF  
100

?

---

1.2.2

2.3

1.3

2

2.1

2.4

2.2

6€ • ÖX°

! !

---

---

---

3

6 \$ \$ a B 6 \$ E

\* 6

? E

6 ? E

U U



1 1 1 1 1 2

2023HYX032

1.  
2

2023HYX032

621000

621000

E mail chenximyzxy@163.com



f f Wé [ W` "b e b ! 3 "

---

1.2.3

1.3

-

' ž ( +

2

2.1

μ

2.2

3

2.3

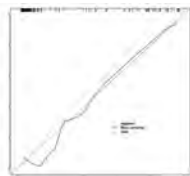
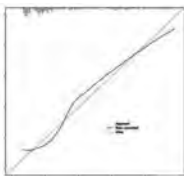
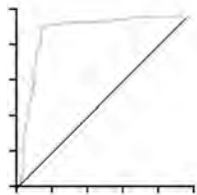
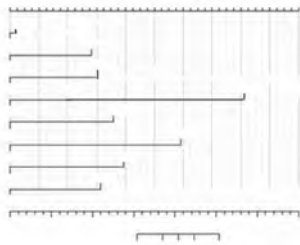
---

---

---

---

---



S3yr'pr'p3yr'p3yr'pé 3yU• 3yr'pr'p"7#yr'pr?ðr'p3y





---

[ h Q W ] W S f U S f [ a f S f Z<sup>TM</sup> ö # • B

v v

2

2.1

---

---

---

---

---

---

---

---

2.5

$\mu$

---

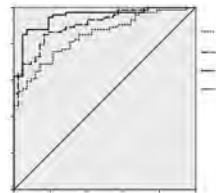
2.2

---

---

---

2.3



2.4



# "

---

**adaa**

---

276800

E mail 13863362849@163.com

---

1.4

1.5

1

1.1

2

2.1

##

1.2

1.3

---

---

---

---



Uč " ž



?FH\$UBDBO @BO ð(F™ 0 Pð

ð B X BJU• €'g P

%

U¾ U•

€'gW¾ Â ðp ÖX° UCEU• 2 0 2

---

• •

---

KJ2020A0193

234000

E mail 120240430@163.com



1.2

1.3

1

1.1

1.4

-

-

---

---

---

---

---

1.5

-

2

2.1

2.2

2.3

2.4

---

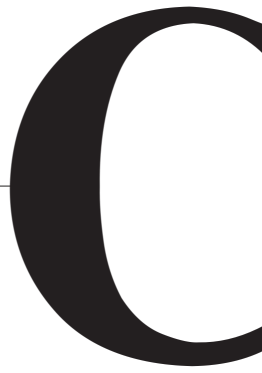
2.5

3

---

Br# Qc Ö0ö\_¥ C•C 2L\$1EÄ" aJÀ 3\$A(Ü @ @Q-@C@P@P 10%JÀ

aaa a b



v v

---

1

1.1

1.2

---

1.3

-

2

2.1

2.2

3

2.3

2.4



# aaaa II

1.2  
1.2.1

1  
1.1

1.2.2

1.2.3

-

-

---

---

---

---

---

-

-

<sup>+</sup>	42	4.81±1.33	3.32±0.94	5.46±1.57	5.27±1.52
	42	5.73±1.69	4.56±1.34	6.85±1.81	6.63±1.75
		2.772	4.910	3.760	3.802
		0.007	<0.001	<0.001	<0.001

1.2.4

1.2.5

-

-

1.3

-

2.4

2

2.1

-

-

μ

2.2

2.5

2.3

3

---

qX•@ŪEF ž@

6& Œ& f A± ” ” °s"[ 1 \*T[Mu

---

1

2

1

%

---

AHWJ2021b103

1.

246501

2

246052

E mail babyone0124@163.com



1.5

-

2

2.1

-

-

2.2

3

-

-

2.3

2.4







S :

---

1.3.2

1.3.3

0 33 ổi E < 0 |

0 33 ổi E < 0 |

1.3.4

û•p

1.4

y





1 1 1 1 2

' " ' ? ^



2023AH052004

234000

1.  
2

233030

E mail wanwanz23@163.com



1  
1.1

1.2  
1.2.1

1.2.2

1.2.3

1.3

2

2.1

-

-

---

---

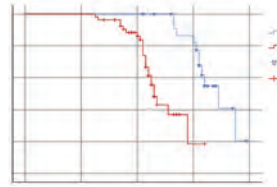
---

---

---

---

2.2



2.3

---

---

---

2.6

-

---

---

---

2.4

3

2.5

---

---

---





1 1 2 1 1

**aaaaa**

---

2023WS517

- 1.
- 2.

253075  
253075

E mail liying9 105@163.com

---

1  
1.1

1.2  
1.2.1

1.2.2

1.2.3

1.3  
3 >

1.4

-

\_\_\_\_\_  
\_\_\_\_\_  
\_\_\_\_\_

2

2.1

\_\_\_\_\_  
\_\_\_\_\_

-

-

\_\_\_\_\_  
\_\_\_\_\_

2.2

$\mu$

\_\_\_\_\_

2.5

-

\_\_\_\_\_  
\_\_\_\_\_

2.3

3

2.4



---

u j Q 1đA Đ  
@20  
AHWJ2021b010  
\$ \$ I Y > !

a b 9¢V‰

---

1

1.1

1.3

- d

1.3.1

- d

1.3.2

2.3

1.4

2.4

2.5

2

2.6

2.1

3

2.2

---


---

---



---



---



---



---



---



---



---



---



---



---

	CD <sub>4</sub> <sup>+</sup> %		CD <sub>8</sub> <sup>+</sup> %		CD <sub>4</sub> <sup>+</sup> /CD <sub>8</sub> <sup>+</sup>	
		1		1		1
58	38.81±4.67	46.79±5.75 <sup>a</sup>	31.41±3.85	28.22±2.69 <sup>a</sup>	1.24±0.23	1.66±0.39 <sup>a</sup>
58	38.74±4.52	43.83±5.22 <sup>a</sup>	31.35±3.72	29.44±2.75 <sup>a</sup>	1.25±0.25	1.51±0.37 <sup>a</sup>
	0.082	2.903	0.085	2.415	0.224	2.125
	0.935	0.004	0.932	0.017	0.823	0.036

---

---

•n

**www**

---

1

1.1

---

1.3.2

1.3.3

1.3.4

1.4

-

2

2.1

|! #

2.4

2.2

2.3



---

1 2 3

amala

---

BHJ17J011

1.  
2.  
3.

266071  
266071

266071

E mail 13145329689@163.com

1  
1.1

1.2

1.3  
1.3.1

1.3.2

---

-

---

---

-

---

---

-

---

---

-

---

1.4

---

---

---

2

OP

E 7 Q7b0A ç ) ED 'öb0E E :

---

---

---

---

-

---

---

-

---

---

-

---

---

W( ' X X ' )



---

1 1 2 1

U)Â ð%pĐ p

b Q5 . 7 4

---

1.  
2

WSJK2024QN107  
571100  
571100

E mail hnslnbzk@163.com

1.2

1.3

1

1.1

1.4

1.5

---

2.2

-

-

---

---

---

---

1.6

2.3

-

2

2.4

2.1

-

2.5

-

---

---

---

3

---

3

-

-

---

---

---

---



आवाज



1  
1.1

1.2

1.3  
1.3.1

1.3.2

2.3

1.3.3

2.4

1.3.4

2.5

1.4

-

2.6

2

2.1

-

-

\_\_\_\_\_

\_\_\_\_\_

\_\_\_\_\_  $\mu$  \_\_\_\_\_

\_\_\_\_\_

\_\_\_\_\_

-

-









v v

1.3.3

1.4

2

2.1

2.2

2.3

2.4

---

---

---

---



1.2  
1.2.1

μ

1.2.2

1.2.3

1  
1.1

1.3

v v

2.4

1.4

-

-

-

2

\_\_\_\_\_

$\mu$

$\mu$

2.1

\_\_\_\_\_

-

3

-

\_\_\_\_\_

$\mu$

$\mu$

\_\_\_\_\_

2.2

-

\_\_\_\_\_

\_\_\_\_\_

\_\_\_\_\_

2.3

\_\_\_\_\_

\_\_\_\_\_

\_\_\_\_\_

\_\_\_\_\_

---

g

---

• U™@€Ö

---

202301027

010017

E mail nanjlnq@gmail.com



v v

---

2

2.1

-

-

---

	LCR	HALP
78	1.65±0.45	41.05±4.21
24	0.39±0.14	26.33±3.17
	13.475	15.786
	<0.001	<0.001

---

2.2

---

---

3

---

2.3

2.4

---

---

---

---

@ % - (ø3B, 2017, 10/14/17

---

• •

1, m, ? , 1

f / ?

1  
1.1

1.2  
1.2.1

1.2.2

1.3

-

2  
2.1

---

-

-

---

---

---

-

-

---

---

---

^ T    I I T    ^ T



---

1 2 1 1 1 1 1 1 1 1

---

1. 100029  
2.

E mail liangma321@163.com

NO.ZRJY 2024 BJ02

012000

1.2.3

1.3

1

2

1.1

2.1

1.2

2.2

1.2.1

2.3

1.2.2

2.4



---

---

---

---

---

---

---



---

2022Y N09

010017

1.

2

014030

E mail htling2013@163.com

---

È H 8fs™4F,à

Z @ ž \$ ` ` U 9 <

ž \$ ( ( 9 < 4

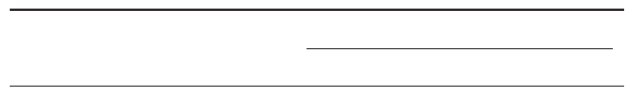
2

2.1



#

#.



2.2



---

3

UÀ

---

• •

# ana a k



1.2

1

1.1

1.3

1.4

1.6

-

2

2.1

1.5

2.2

2.3

-

-

μ

μ



---

\$

3 3 y

S e

---

---

- 1. 2322137D 075400
  - 2. 075400
- E mail 1764975558

1.3

1.4  
1.4.1

1  
1.1

1.4.2

1.2

1.4.3

---

1.4.4

---

---

1.4.5

---

1.5

ž R

9ÀB \*Y ± €p

" " ö \_

' ž



---

---

---

---

μ

---

---

-

---

-

---

---

---

---

-

-

---

---

---

---

---

• •

---

2022AH050755

E mail [aydyfybqxyнк@163.com](mailto:aydyfybqxyнк@163.com)



---

1.2.3

1.2.4

1.3

---

---

-

---

---

-

---

---

---

###

##

---

2.4

2.5

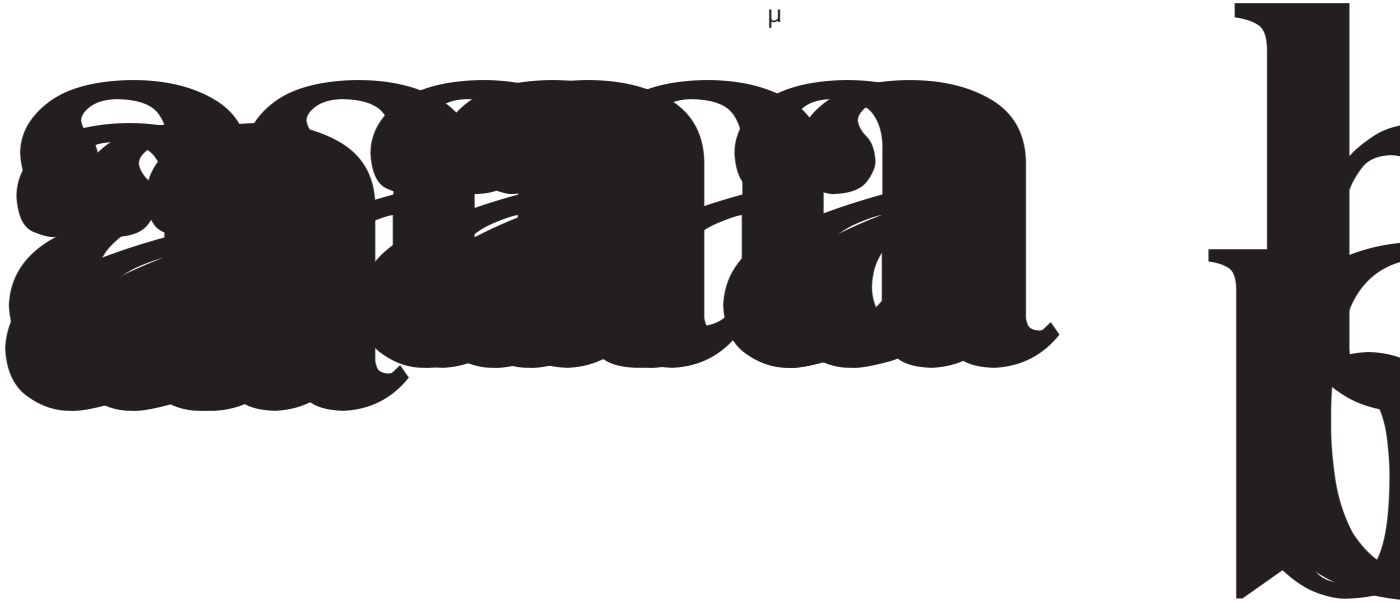
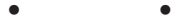
---

---

---

3





---

μ

1

1.1

---

$\mu$                       H                      `ö

---

---

$\mu$                        $\mu$

---





1 1 2 2

אברהם

2023WZ12

1.  
2

010017

010017

E mail nmgy2005ydy@163.com

1

1.1

1.2

1.2.1

1.2.2

μ

- -

1.2.3

- -

1.2.4

1.3

2.2

-

2.3

2

2.1

2.4

- -

V V

---

---

---

---

---

	Gensini				QRS	
sLOX 1	0.439	<0.001	0.539	<0.001	0.474	<0.001
	0.556	<0.001	0.663	<0.001	0.592	<0.001
sST2	0.491	<0.001	0.618	<0.001	0.501	<0.001

3







1.2  
1.2.1

1  
1.1

1.2.2

1.3

-

---

2

2.1

---

---

$\mu$

---

2.4

-

-

-

-

---

$\mu$

---

2.5

---

2.2

-

-

-

---

$\mu$

---

$\mu$

---

2.4

2.3

2.5

---

---

---

$\mu$

---

; À tñ MQÜ e•À t"Ü -QÜ ð'-Ð C,v <  
3

1 1 2 1 1



---

202103a07020012

2022e07020054 2022

YZJJ2023QN49

- 1.
- 2.

230031  
233000

E mail [fjman@cmptac.cn](mailto:fjman@cmptac.cn)



1.2

1

\_ (

& \$# " \$ ž #

1.1

---

---

---

---

---

---

---

---



---

UÀ



1 1 1 2 3

2021SZZ069

- 1. 618000
- 2. 618000
- 3. 618000

E mail 18981001058@163.com

1

1.1

1.2

1.2.1

1.2.2

1.3

-

2

2.1

-

-

2.2

2.3

2.4

3

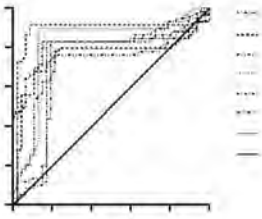
-

-

.

-

-



---

• •

**2022KJ13**

% 8` H

---

2022KJ13

621100

E mail 36314561@qq.com



2

2.1

2.2

3

2.3

---

---

---

---

---

---

---

---

---

---

---





1 1 1 1 2

aaaaa

2021szk013

1.  
2

246003  
246003

E mail zha013866062871@163.com



1.2.3

1.2.4

1

1.1

1.2.5

1.2

1.2.1

1.2.6

1.2.2

1.3

2

2.1

2.2

2.3

		95%		cut off	%	%		
TC	0.697	0.609-0.816	0.053	4.85 mmol/L	56.10	78.40	0.344	<0.001
TG	0.803	0.760-0.916	0.040	2.27 mmol/L	78.80	70.30	0.491	<0.001
HDL C	0.750	0.763-0.929	0.042	1.44 mmol/L	77.30	70.30	0.475	<0.001
LDL C	0.833	0.684-0.871	0.048	3.17 mmol/L	74.20	86.50	0.607	<0.001



---

1 2

Yi # 26456 Y5001 UZ Ya 5 / ' 4 '

UZ d'

---

1. TYYLKYJJ 2023 018  
610041  
2. 550000  
E mail 780837482@qq.com



2

2.1

1.2.2

2.2

1.2.3

-

-

---

---

1.3

---

2.3

-

---

---

---

---

2.4

2.5

3

# % 5Cp

#Q"P ß G Q

" \$, #rBzW. BaD

#3

RXf?ôF6 - 5ð(pÑÂ" ĵ b"•!!",



^ gp Ã gp1êSgp.ŠSgp\*ñ gp8› gpJ« gp p w

**a**

**ap**



'T°ŸFëU%&(XB|Bv8B|E,92%8B

1

1.1





**あ あ あ あ**

1.2

1

1.1

1.3

1.3.1

1.3.2

1.3.3

2.2

-

-

---

---

---

---

---

2.3

1.3.4

2.4

1.4

-

3

2

2.1

-

-

---

---

---

---

---

---

-

-

---

---

---

---

---

---

---

---

---

---

) %) E

) %) **UÀUÀ**  
UÀUÀ, P/mtbP/\$50V\$

\$ \$ %

\$ \$

aaab



---

2.4

2

2.1

# "Z" # \$ "

|

3

2.2

2.3



---

a a a a

1.2  
1.2.1

1.2.2

1  
1.1

1.2.3

1.2.4

1.2.5

2.2

A

B

1.3

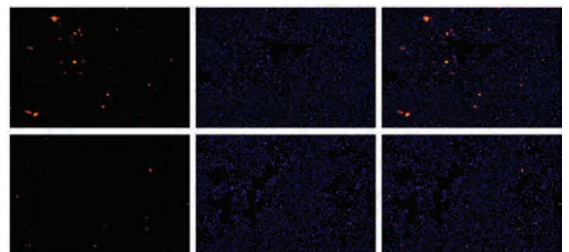
-

2

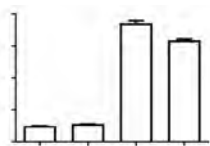
2.1

2.3

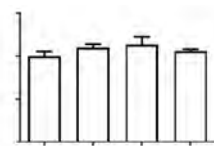
A



B



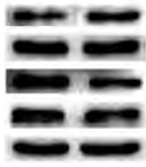
C



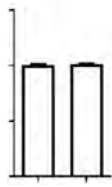
2.4

3

A



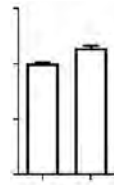
B



C



D



E



3

# #

B

#





O

H

---

1.3

-

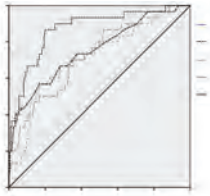
2

2.1

2.2

2.3

3



बिना शर्त



f \*

1

1.1

---

1.3.2

---

2.4

-

-

---

---

---

---

2.5

---

---

---

3





---

1. AHWJ2021b149  
245000  
2. 230022  
E mail 15255985030@163.com



1.2  
1.2.1

1.2.2

1  
1.1

1.3

-

2  
2.1

-  
-  
-

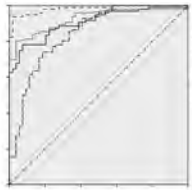
-  
-

-

2.2

-

2.3



2.4

-  
-  
-  
-  
-  
-

“Â

5 41 Ó, 12ãC ;• ì,1\ø 4Û C •  
\$ # 3 B > K D 3  
;



1 2 1

# asala

AHWJ2021b044

1.

235000

2.

235000

E mail 857620121@qq.com



1.2

1

1.1









---

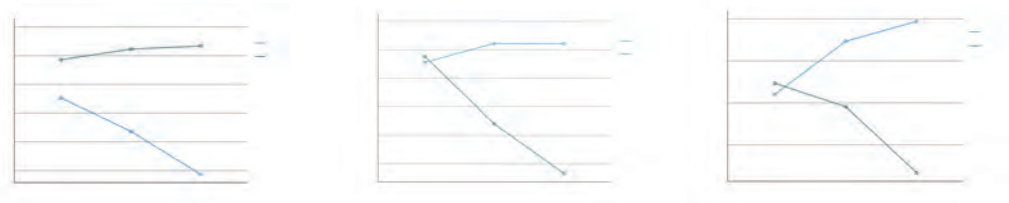
51JDI f1UG•

XI ' e FZW i a g` V



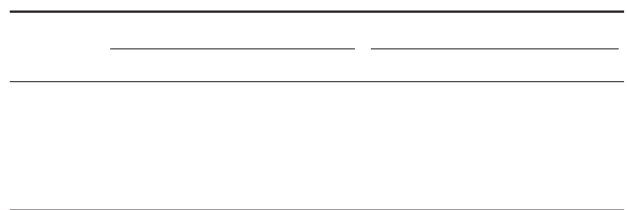
2.3

		14 d						d
NPWT	15	4	9	2	13 86.67 <sup>a</sup>	1 6.67 <sup>a</sup>	65.53±24.36 <sup>a</sup>	
/	15	0	6	9	6 40.00	7 46.77	97.47±17.06 <sup>a</sup>	
					5.167	4.261	13.954	
					0.023	0.039	<0.001	



2.4

3





---

---

AHWJ

---

ÿ "y •Užž @@\$d † U•

1.2  
1.2.1

1.2.2

# ñ @Ô J5J5a,,£PJ5a BB uU• 5%o " P #5 ° % )

1  
1.1

-

-

1.3

-

2

2.1

2.4

-

2.5

2.2

3

2.3





- 1. Q19039 610011
- 2. 518000

E mail [xiackangli\\_cpu@126.com](mailto:xiackangli_cpu@126.com)



C

1.2  
1.2.1

1  
1.1

---

---

---

---

-

-

---

---

2

2.1

---

2.4

2.2

-

2.5

-

---

---

2.3

2.6

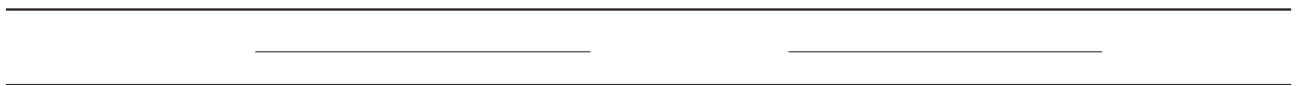
-

-

---

---

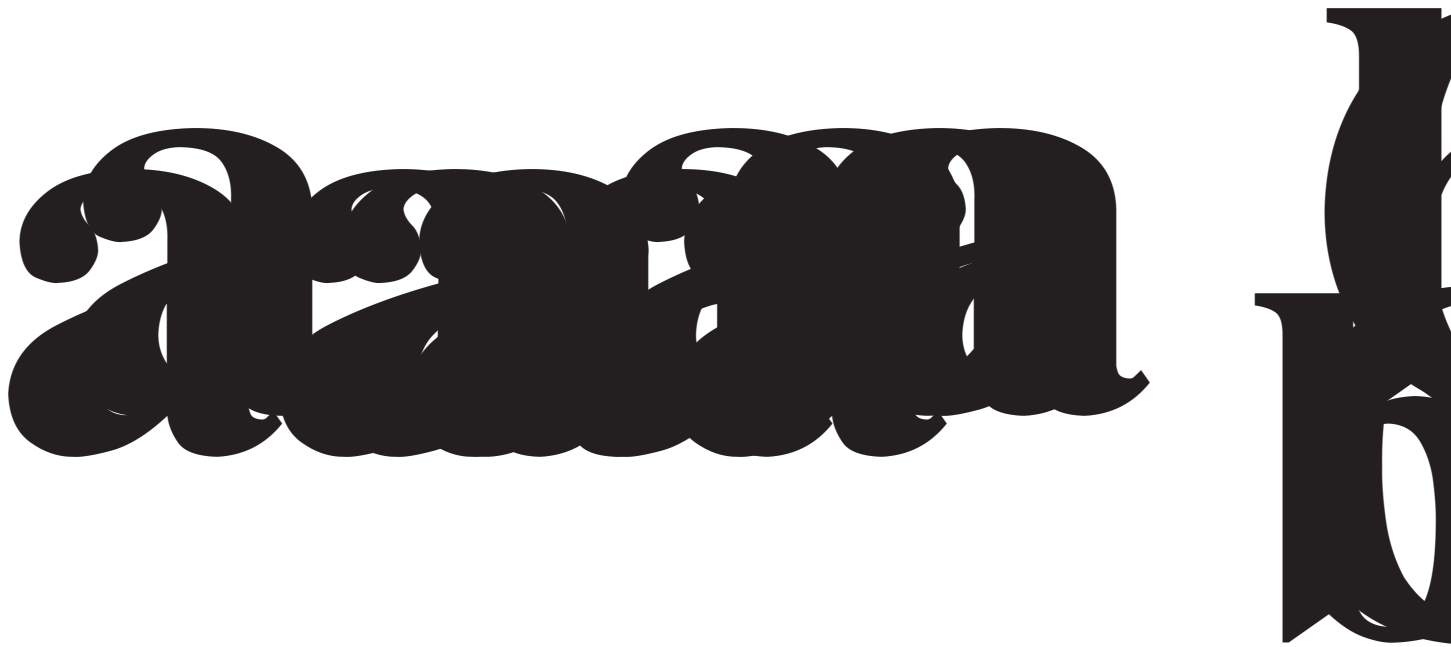
---







1 2 2



1. 25ND018  
2. 610030  
610000  
E mail Xiangchunhua001@163.com

---

1  
1.1

1.2  
1.2.1

μ





---

---

E mail b

100081

2.2.2

2

2.1

2.2

2.2.1

2.3

2.3.2

2.3.3

2.3.1







---

3

3.1

(

B

,

5

4.3

,

,

4.4

,

,

,



2009 5

80

2016

"

"

"

"

"

"

"

"

"

"

"

"

"

"

"

"

"

"

6

020- 32290789 206

020- 32290789 201

[http //xyq.cbpt.cnki.net](http://xyq.cbpt.cnki.net)  
jmdt@ vip.163.com