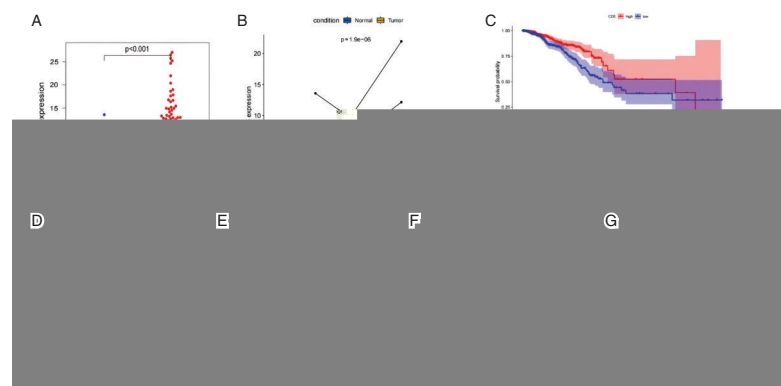


2025 4 17 4 128

Volume 17 Number 4 April 2025



CD5  
CD5

CD5

CD5

612 CD5

ISSN 1674-6929





# 分子诊断与治疗杂志

JOURNAL OF MOLECULAR DIAGNOSTICS AND THERAPY

2025 4 17 4 128 Monthly Volume 17 Number 4 April 2025

---

Sun Yat sen University  
China Family Doctors Magazine Publisher Co. Ltd.  
ZHANG Yipeng  
SHEN Ziyu  
LI Ming

<JOURNAL OF MOLECULAR DIAGNOSTICS AND THERAPY> Editorial Office  
LI Xiaolan LI Caizhen MO Yuanhao LING Qianwen MAI Wei  
China Family Doctors Magazine Publisher Co. Ltd.

11 FI. I ##



# 分子诊断与治疗杂志

2025 4 17 4

---

FOXMI	589
MPVLR	593
NLR PLR CA724	596
	601
CRP AFP IL 6	606
	610
GLP 1 PINP SOST	614
MHR	618
CRP PCHE HBDH	622
D D CAPRINI	626
	630
TLR9 IL 17 TIR	634
	638
MIR 146B 5P IL 17	642
2019-2022	646
HIF 1 ACTA	650
EGR 1 BACE1	654
HUH 7	658
CTEPH MHR NT PROBNP RDW	662
HCY CYSC	667
NPAR	671
TIMP 1 ELAFIN	675

OPG RANKL .....	679
MALDI TOF MS CYP2D6 CYP2C19	
.....	683
SIRI CLAUDIN 5	
.....	688
TBARS NGF BDNF	
.....	692
AD7C NTP 5 HT ACH	
.....	696
MIR 125B MIR 145 MIR 146A	
.....	700
TFH IL 21 HACAT	
.....	705
TLR4 FAI .....	709
CYS C CA125	
.....	713
TEAD4 BTG2	
.....	717
GPX1 PI3KCB	
.....	721
NLR	
.....	725
SRC/FAK .....	729
TLR4 TLR9 IL 35	
.....	733
PIK3CA PI3K AKT MTOR	
.....	738
2 KLF4	
.....	743
SDEEG ZAG NPY MIR 124	
.....	747
2022-2023 .....	752
MPV .....	755
.....	759
NPAR .....	763
EGFR	
.....	767
PG PG G17 PGR	
.....	771
41 .....	775
13 .....	778
MIR 208A .....	

# JOURNAL OF MOLECULAR DIAGNOSTICS AND THERAPY

Monthly Volume 17 Number 4 April 2025

## CONTENTS

### COMMENTS

Research on the role of FOXM1 in breast cancer progression  
.....

### ORIGINAL ARTICLES

The value of mean MPVLR in predicting venous thromboembolism after thoracoscopic lobectomy  
.....

The predictive value of NLR PLR and CA724 on the efficacy of postoperative chemotherapy for colorectal cancer  
.....

Evaluation of clinical features and diagnostic efficacy of routine laboratory indicators in community-acquired pneumonia with bloodstream infection in children  
.....

Changes of serum CRP AFP and IL-6 levels in neonatal jaundice and their predictive value for acute bilirubin encephalopathy  
.....

Expression of in breast cancer and its relationship with tumor microenvironment  
.....

The relationship between serum GLP-1 PINP SOST levels and osteoporosis after thyroid cancer surgery  
.....

The predictive value of MHR for chemotherapy efficacy and prognosis in patients with advanced gastric cancer  
.....

Pathogenic bacteria and risk factors of multidrug-resistant organism infection in critically ill patients and their correlation with CRP PChE and HBDH  
.....

Predictive efficacy of serum D-D level combined with caprini evaluation for lower extremity deep vein thrombosis after hip replacement surgery  
.....

Relationship between plasma and disease severity cognitive function in patients with epilepsy  
.....

YY

Prognostic value of serum TLR9 IL-17 and TIR combined detection in patients with diabetic foot ulcer  
.....

Prognostic value of serum TLR9 IL-17 and TIR combined detection in patients with diabetic foot ulcer  
.....

Characteristics of auto te t s mbined dec ia ot ulcer ceticot nentially ilractPredict

Epidemiological characteristics and etiology analysis of foodborne diseases in Tai'an City from 2019 to 2022

Ultrasonographic blood flow analysis and serum levels of HIF-1 $\alpha$  and ACTA in pregnant women with oligohydramnios complicated by fetal distress

Efficacy of serum Egr-1 and BACE1 in predicting relapses after drug withdrawal in children with preadolescent epilepsy

Effects of radiation-produced exosomes on the immune microenvironment of Huh-7 tumor cells

Relationship between MHR NT-proBNP RDW severity and prognosis in patients with pulmonary embolism secondary CTEPH

Relationship between leukoencephalopathy severity and serum Hcy CysC in patients with cerebral infarction

Association between NPAR ratio and cognitive function in patients with first-episode depression

The diagnostic value of serum TIMP-1 and elafin levels for postpartum pelvic floor dysfunction in primipara

The influence of OPG and RANKL on forearm shaft fracture and prognosis model construction of elastic intramedullary

Establishment of a MALDI-TOF MS method for the detection of CYP2D6 CYP2C19 and gene polymorphisms

The predictive value of SIRI and claudin-5 for delayed encephalopathy in acute carbon monoxide poisoning

The diagnostic value of serum TBARS NGF BDNF in bipolar disorder and their relationship with different clinical phases

Curative effect of transcranial magnetic stimulation combined with drugs and its influences on cognitive function mental behavior symptoms levels of AD7c-NTP 5-HT and ACh in Alzheimer's disease

Relationship between the expression of miR-125b miR-145 miR-146a in peripheral blood mononuclear cells in patients with lung cancer and postoperative pulmonary infection

Effects of serum Tfh cells and IL-21 levels in patients with psoriasis vulgaris on the proliferation cycle of HaCaT cells

Diagnostic value of serum TLR4 and FAI levels in idiopathic central precocious puberty

Relationship between serum levels of Cys-C CA125 and biliary tract inflammation in elderly patients with gallstones

The expression of TEAD4 and BTG2 in head and neck squamous cell carcinoma and their correlation with clinicopathological features and prognosis

Relationship between GPX1 PI3KCB protein expression and lymph node metastasis and prognosis of colorectal cancer

Predictive value of peripheral blood NLR in pregnant women with hepatitis B virus infection for perinatal prognosis

.....

Mechanism of stress regulation of atrial myocyte remodeling through activation of Src/FAK pathway

.....

Expression and clinical significance of LR4 TLR9 and IL-35 in gingival tissue of patients with chronic periodontitis

.....

Study on the mechanism of Sanhuang Shuai Decoction inhibiting PI3K-AKT-MTOR signaling axis through PIK3CA to activate cell autophagy and protect intestinal epithelial barrier

.....

Analysis of the relationship between the expression of KLF4 in gingival tissue of chronic periodontitis with type 2 diabetes and inflammatory reaction osteogenic differentiation

.....

The clinical diagnostic value of sdEEG combined with ZAG NPY and miR-124 in drug-resistant epilepsy

.....

Etiological surveillance analysis of influenza in Jilin Province from 2022 to 2023

.....

Application value of MPV in the early diagnosis of bloodstream infection

.....

Effect of precise continuous circulation hyperthermic intraperitoneal chemotherapy combined with intravenous chemotherapy in postoperative patients with ovarian cancer

.....

The predictive value of NPAR for adverse pregnancy outcomes in patients with hypertensive disorders during pregnancy

.....

Study on the mechanism of action of neoantigen vaccine combined with EGFR inhibitor on brain metastasis of non-small cell lung cancer

.....

Diagnostic value of PG I PG II G17 PGR combined with Helicobacter pylori antibody in gastric cancer

.....

Chromosome karyotype analysis of 41 cases of first trimester chorionic villus sampling in Wuhan Maternal and Child Healthcare Hospital

.....

Analysis of 13 respiratory pathogens detected in hospitalized children with respiratory tract infection in Huangshi area

.....

## REVIEWS

Research progress of miR-208a in cardiovascular disease

.....



FOXM1

-

3

3.1

2

3.2

3.3



3.7

3.4

4

3.5

3.6

5

0 0 0 0 0 D C F @ F J @ N F @ 8 % C E 2 ... i Q ò v x ' e € . \$ P U 3 / 4

U1BOH 9

---

P<

---

2022 2 2016

100053

E mail xiaomeiccmu@163.com



---

---

CI

---

---



---

• •

---

P<

P<

P< **Conclusion**

**KEY WORDS**

1.2  
1.2.1

1.2.2

1.3

1  
1.1

1.4

- t n

---

P<

---

n=

---

2

2.1

P

P

2.2

# 58

43

) '

P

& (

& ( & )

& )

& )

& (

2.3

P

3

---







1 2 1 1

P P P  
P



---

P<

P<

P<

P>

P<

**Conclusion**

**KEY WORDS**

1.3

%

n=

n

U

P

P

2.4

2

2.1

P

P>

2.5

2.2

P

2.3

n M P P

n=

n=

Z

P

---

---

---

Z  
P

---



---

• •

---

---

P<

**Conclusion**

**KEY WORDS**

1

1.1

P

v v

$\mu$   $\mu$   
1.3

—  
n  
—

- t

F  
P

n

P

P

2.4

P

r= r= r= P

2.5

2

2.1

P

P

—  
n  
—

—  
n  
—

F  
P

t  
P

P

P

2.6

2.2

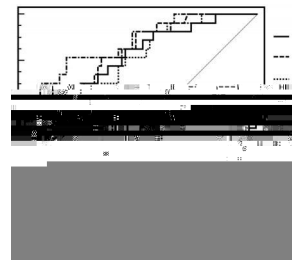
P

2.3

$\mu$

$\mu$

$\mu$



P

S.E.

Wald

OR

CI

P

v v

CI

Z

P

3

Spearman





2.3

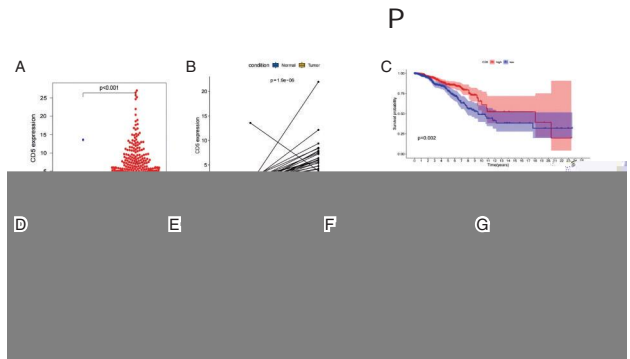
A B C D

E F

2.5 CD5

CD5  
CD5  
CD5  
P  
P=  
CD5  
CD5

CD5  
P=



D E F G

2.4

CD5 CD5

CD5  
CD5

2.6 CD5

A B

C D

CD5  
CD5  
CD5  
CD5

3

CD5

CD5  
CD5



CD5

CD5

CD5

CD5

129 : 2" REM

CD5

CD5

CD5

CD5

CD5

CD5



1 1 2 3

n=

n=

P

P

P

ž

"

.



---

P<

P<

P<

**Conclusion**

**KEY WORDS**

P

1.2

1.2.1

1.2.2

1

1.1

n=

n=

---

2

2.1

P

2.2

P

2.3





---

P<

P< **Conclusion**

**KEY WORDS**

1.2.2

1.2.3

1

1.1

1.3

t n

P

2

~~MH~~

Cl

1.2

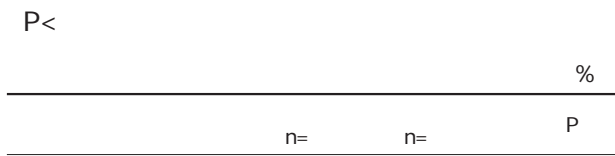
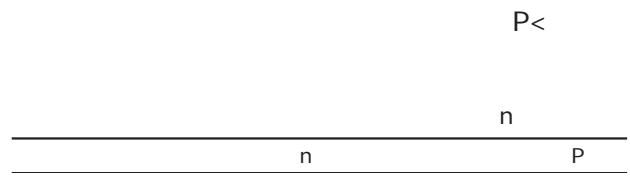
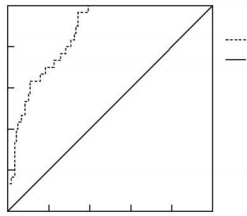
1.2.1

Co

\* #ž

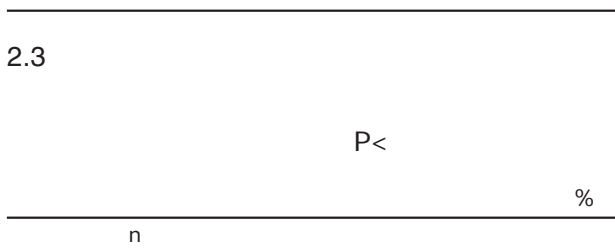
n=

v v



---

2.5



$P$

3

---

$P$

---

2.4

---

---

SE	Wald	HR	CI	P
----	------	----	----	---

---

---

---

• •

1 2 2

n=

n=

P

OR

P

OR

OR

OR

P

---





---

5 ` Ž ö «A]

---

• •

Spearman      Pearson      6 H F

n      n  
Logistic  
ROC  
P<

---









---

miR 124

miR 132

P<

**Conclusion**

miR 124

miR 132

**KEY WORDS**

miR 124

miR 132

miR 124 miR 132

miR 124 miR 132

1

1.1

---

1.2.2  $\mu$  miR 124 miR 132

3

miR 124 miR 132

miR 124

miR 132

miR 132

miR 124 miR 132

miR 124 miR 132

miR 124 miR 132

1003

miR 124 miR 132

miR 124 miR 132 132

# % \$

miR [ D

n

n

P

P

P

**Prognostic value of serum TLR9 IL-17 and TIR combined detection in patients with diabetic foot ulcer**

**ABSTRACT Objective**

**Methods**

n=

n=

**Results**

P

P

P

**Conclusion**

**KEY WORDS**

---

1.2  
1.2.1

1.2.2

TLR9

1  
1.1

1.2.3

n

n

1.3

n

-

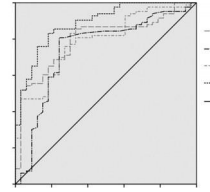
t

---

P  
2  
2.1

P

P



3

2.2

TLR9

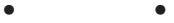
P

2.3

TLR9

TLR9





1      2      2      2      1 2

P

P

P

P

P<

P



1.2  
1.2.1

1.2.2

1.2.3

1.2.4

1  
1.1

1.2.5

P>

1.3

-

t

v v

P<

%

2

2.1

P

P

P>

P<

P>

U P

P

2.4

P

n

n=

n=

P

P<

P>

P<

P<

-

t P

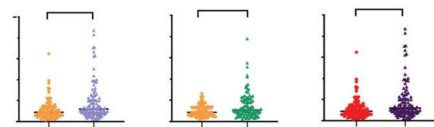
2.2

P<

P<

P>

2.3



P<

P<





1 2 3 1

n n

P

P

P



---

P **Conclusion**

---

1.4

n

t

RR

P<

2

2.1





1 2 3 1 1 4

#

#



---

P< **Conclusion**

**KEY WORDS**

1.3

n

P<

2

2.1

2.2

1

1.1

---

---

1.2

1.2.1

---

2.3

1.2.2

2.4

P<

P<

---

2.

---



• •

n=

n=

P<

CI

### Ultrasonographic blood flow analysis and serum levels of HIF-1 $\alpha$ and ACTA in pregnant women with oligohydramnios complicated by fetal distress

**ABSTRACT Objective**

**Methods**

n=

n=

**Results**

P<

P<

CI

**Conclusion**

---

---

**KEY WORDS**

1

1.1

=

n=

n

1.2

1.2.1

1.2.2

---

- n

---

n

---

t  
P

---

---

-

---

n

---

t  
P

---

---

-

---

n

---

t  
P

---

---

n

---

t  
P

---

---

Cl

3



1            2            1            1            1

n=

n=

CI

P<

P<

P

**Efficacy of serum Egr-1 and BACE1 in**



---

CI

P< **Conclusion**

**KEY WORDS**

—S 444—60\*

, G

, G

Y d

A

d

---

2

2.1

P>

P<

---

n	n=z
	ž
	ž
	z

2.4

---

2.2

3

P

P<

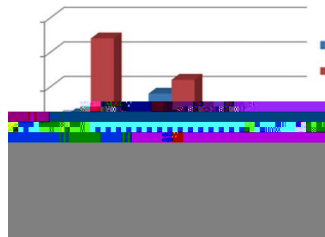
2.3

---

# 9 # #









---

• •

1 2 1

4

---

---

n=

**Results**

P<

P<

P<

P< **Conclusion**

**KEY WORDS**

1

1.1

n=

---

n=	n=	n=	n=	F	P

2

P	P	P

---

---

---

eo o-





---

• •

---

P<

P<

P<

P<

**Conclusion**

**KEY WORDS**

1.2

1.2.1

1.2.2

1

1.1

1.2.3

1.2.4

---

1.2.5

n  
0

1.2.6

1.3

M P P





1 1 2 1

n= n=

P , B ,



1. 202120  
201900  
2. 201900

E mail EASTHUANGY@163.com

---

CI

r=

P<

**Conclusion**

**KEY WORDS**

1

1.1

H

,

G

---

---

n -

---

n \_\_\_\_\_

---

t  
P

---

2.2

2.3

P>

P

P

---

n

---

t  
P

---

---

-

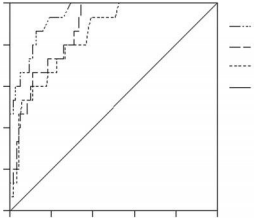
---

n

---

t  
P

---



2.4

2.5

r= P

---

CI

---

---



---

• •

---

---

P< **Conclusion**

**KEY WORDS**

1

1.1

P>

---

-

---

n

---

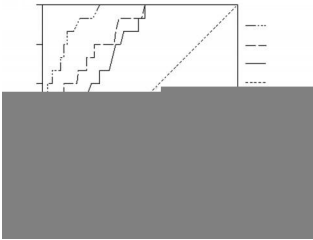
t  
P

---

---

CI

---



---

n=

---

---



9

, < 8

21



22

6



8





1      2      2      3      1      1

, B



**KEY WORDS**

d WS d \_ i

1.2.3

-  
n

F  
P  
P P

2.4

P  
n  
n

1.3

-  
F n t  
P

P

2

2.5

2.1

P

3

2.2 P

2.2

P

-  
n

F  
P  
P P

2.3

P

---

---

n

---

F  
P

---

P P P

<



# CYP2D6 CYP2C19

## HTR1A

1 1 2

CYP2D6 CYP2C19 HTR1A CYP2D6\*10  
CYP2C19\*2 HTR1A

CYP2D6\*10 CYP2C19\*2 HTR1A μ  
μ

CYP2D6\*10 CYP2C19\*2 HTR1A

CYP2D6\*10 CYP2C19\*2 HTR1A

### Establishment of a MALDI-TOF MS method for the detection of *CYP2D6* *CYP2C19* and *HTR1A* gene polymorphisms

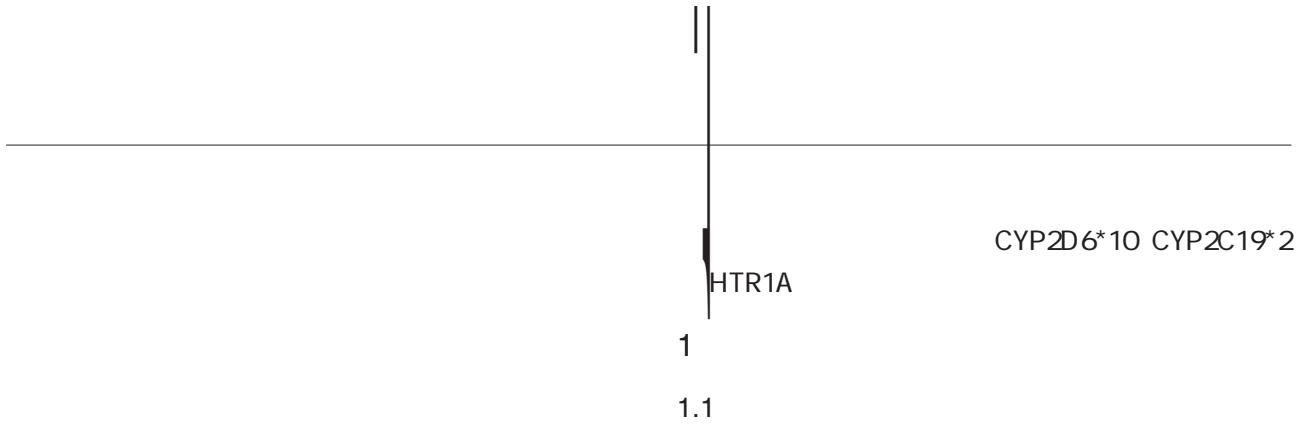
**ABSTRACT Objective** CYP2D6  
CYP2C19 HTR1A

**Methods**  
CYP2D6\*10 CYP2C19\*2 HTR1A

**Results** CYP2D6\*10  
CYP2C19\*2 HTR1A μ μ

**Conclusion** CYP2D6\*10  
CYP2C19\*2 HTR1A

**KEY WORDS** CYP2D6\*10 CYP2C19\*2 HTR1A



[

CYP2D6\*10  
CYP2C19\*2 HTR1A  
CYP2D6\*10 CYP2C19\*2  
HTR1A

---

CYP2D6

CYP2C19

HTR1A

CYP2D6\*10

YP2C19\*2

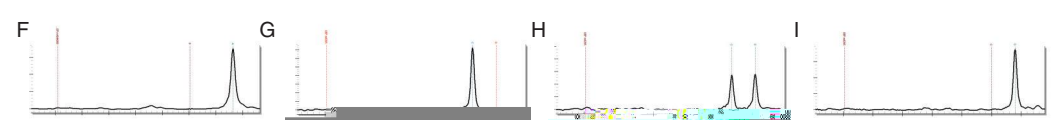
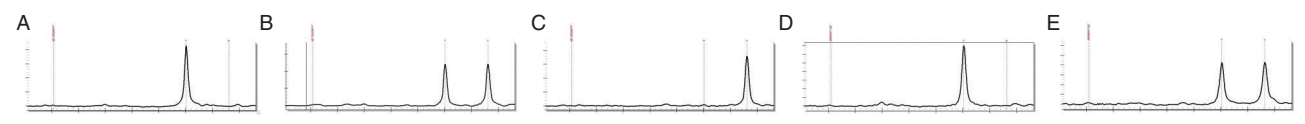
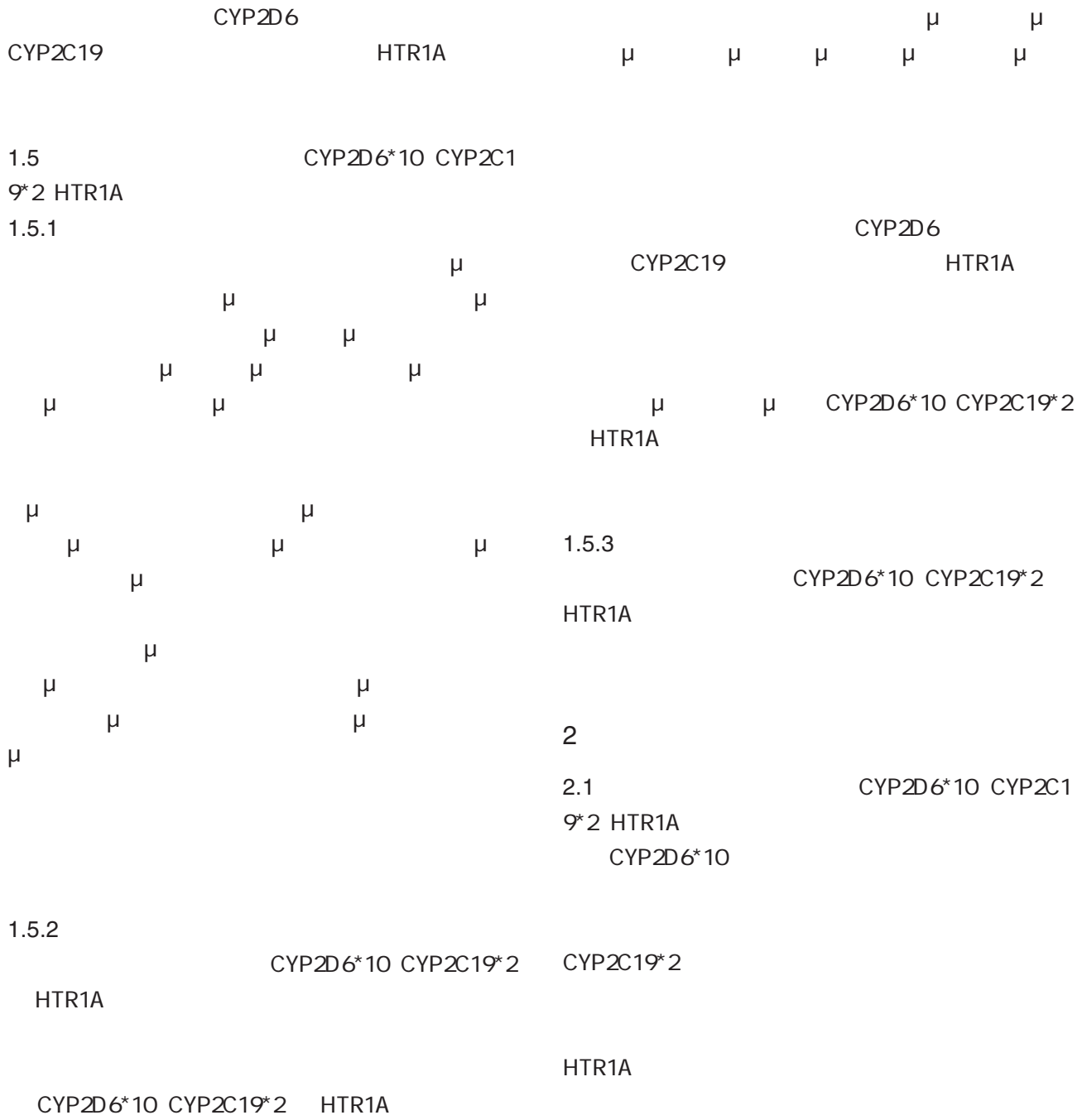
HTR1A

CYP2D6\*10

CYP2C19\*2

HTR1A

---



HTR1A CYP2D6\*10 CYP2C19\*2

2.2  
CYP2C19\*2 HTR1A

CYP2D6\*10

CYP2D6\*10 CYP2C19\*2

HTR1A

CYP2D6\*10\*  
HTR1A

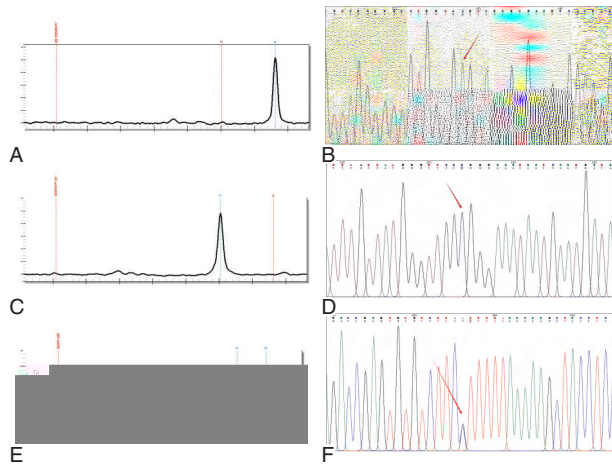
CYP2C19\*2

μ

μ

CYP2D6\*10 CYP2C19\*2 HTR1A

3



CYP2D6\*10 CYP2C19\*2 HTR1A

CYP2D6\*10  
CYP2C19\*2

HTR1A

2.3

	CYP2D6*10	CYP2C19*2	HTR1A
μ			
μ			
μ			
μ			
μ			
μ			
	CYP2D6*10	CYP2C19*2	HTR1A
μ			
μ			

---

CYP2D6\*10 CYP2C19\*2 HTR1A

HTR1A

CYP2D6\*10 CYP2C19\*2

CYP3A4 SLC6A4

CYP2D6\*10 CYP2C19\*2 HTR1A



1      2      1      1      3

Cl

P<

P<

P



P<

CI

P<

P< **Conclusion**

**KEY WORDS**

1.2  
1.2.1

1.2.2

1.2.3

1

1.1

v v

1.3

- t n

		-	n
n=	n=	t	P

P

2

2.1

P<

n

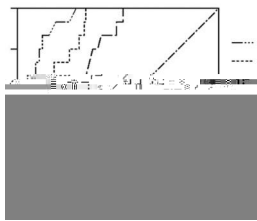
t  
P

2.2

CI

P

3



2.3

P<

2.4

---

---

	SE	Wald	OR	CI	P
--	----	------	----	----	---

---

---

---

• •

---



---

n

2.4

Pearson

P

P

2

2.1

P

2.5

2.2

P

P

3

2.3

P

U•

9

---



P P  
P P  
P>

**Curative effect of transcranial magnetic stimulation combined with drugs and its influences on cognitive function mental behavior symptoms levels of AD7c-NTP 5-HT and ACh in Alzheimer's disease**

**ABSTRACT Objective**

---

P<

P<

P<

P>

**Conclusion**

**KEY WORDS**

1.2

1

1.1

P>

---

P

1.3.3

1.3.4

1.3.5

e n

1.4

#

-

t

n #

---

-

---

n

---

F  
P

---

n

---

F  
P

---

P P P

---

-

---

n μ

---

F  
P

---

P P P

---



1 1 2

P<

P<

P

P<

**Relationship between the expression of miR-125b miR-145 miR-146a in peripheral blood mononuclear cells in patients with lung cancer and postoperative pulmonary infection**

**ABSTRACT Objective**

**Methods**

**Results**

---

E mail



v v

1.2.3

%

n=

n=

P

1.3

n

-

t

P

2

2.1

P<

2.2

P<

-

n=

n=

t

P

2.3

P<

2.4

P

OR OR CI P

2.5

---

---

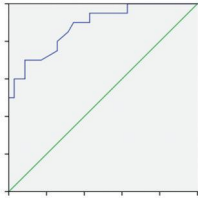
CI

P

---



#









---

---

---

t  
P

---



---

• •

---

---

1

1.1

---

---

		-	n	
n=	n=	t	P	

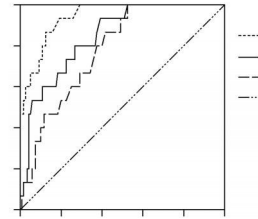
---

---

---

AUC	CI
-----	----

---



---

---

	-
n	

---

---

t
P

---

2.4

P

3

---

---

	SE	OR	CI	P
--	----	----	----	---

---



; 5 B B





n=

n=

n=

P

, B

**Conclusion**

**KEY WORDS**

P

1.2  
1.2.1

1.2.2

1

1.1

n -

---

n=

n=

n=

n=

F

P

---

2.3

1.2.3

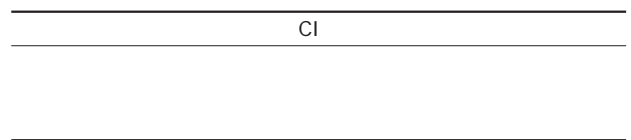
r= P r=

2.4

CI

1.3

q n t SNK



2

2.1

P

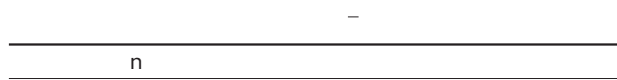


3



2.2

P



---

6

---

• •

---

---

P<

P

P< **Conclusion**

**KEY WORDS**

1.3

n

P

P<

2

n

2.1

n

P

P

n

n

P

2.2

P<

2.4

P<  
2.3

P

n

n

P

P

v v

---

---

	SE	Wald	OR	CI	P
--	----	------	----	----	---

---

---

3

---

• •

---

P<

P<

P< **Conclusion**

**KEY WORDS**

1.2

1.3

t

-

n

P

2

2.1

1

1.1

P

%

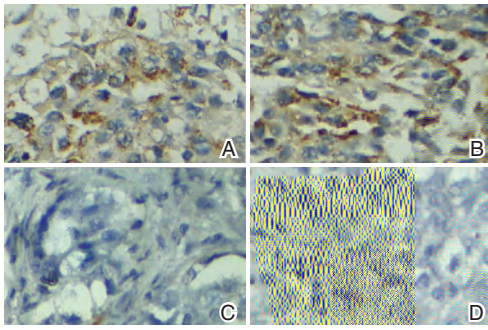
---

n	_____	_____	_____	_____
	n=	n=	n=	n=

---

P

2.2



n	-		
n=	n=	t	P

P

P

2.3

P

2.4

P

n	
n	P

P

3

SE	Wald	df	OR	CI	P
----	------	----	----	----	---

---

---

• •

P P  
P P  
CI

**Predictive value of peripheral blood NLR in pregnant women with hepatitis B virus infection for perinatal prognosis**

**ABSTRACT Objective**

**Methods**

**Results**

P<

P<

P<

CI

---

KEY WORDS

1.2

1

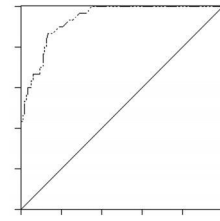
1.1

G

P>

2  
2.1

P



P

—  
n

3

t  
P

2.2

P

2.3

P

2.4

%

—  
n

P

—

—

— OR CI P

— OR CI P

—



---

• •

---

---

P

P>

P<      **Conclusion**

**KEY WORDS**

Q

1.7

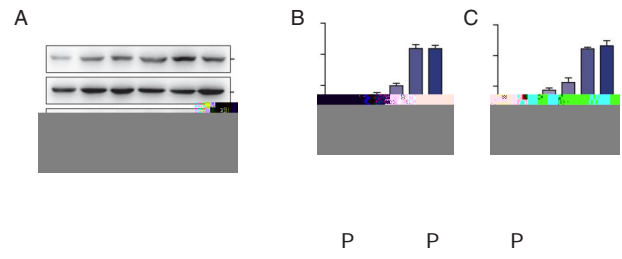
2

2.1

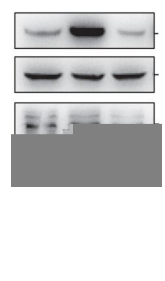
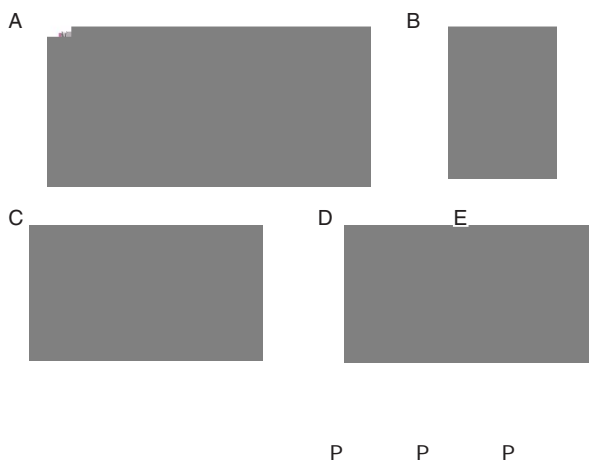


t  
P

2.2



P



2.3

P

2.4

P

t=  
P





n

IL 35

n

IL 35

IL 35

n

n

IL 35

n



---

P<

P<

P<

1.3

1.3.1

n  
1.3.2

-  
n

F  
P  
P P P  
P

2.3

P

n

- n  
n n= n= t P

n

1.4

F  
n

-

s nkq

P

2

2.1

2.4

2.2

P

2.5

P

r= r= P r=

P

---

---

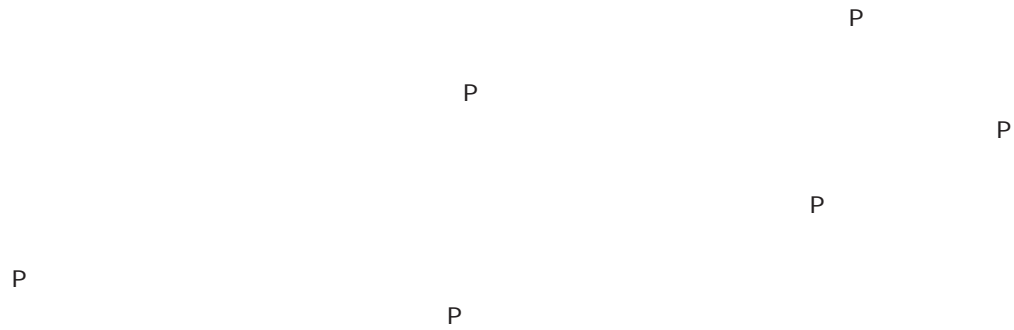
	SE	Wald	OR	CI
--	----	------	----	----

---

---

---

$x^s$



**Study on the mechanism of Sanhuang Shuai Decoction inhibiting PI3K-AKT-MTOR signaling axis through PIK3CA to activate cell autophagy and protect intestinal epithelial barrier**

**ABSTRACT** Objective

**Methods**

---

---

**Results**

P

P

P

P

P

P

**Conclusion**

**KEY WORDS**

!

B



---

P

P

P

2.3

P>

P

P>

P

P

---

---

---

---





1 2 3

P

P

P

P

P

**Analysis of the relationship between the expression of KLF4 in gingival tissue of chronic periodontitis with type 2 diabetes and inflammatory reaction osteogenic differentiation**

**ABSTRACT Objective**

**Methods**

**Results**

---

---

P<

P<

P<

P<

P< **Conclusion**

**KEY WORDS**





---

• •

1 2 1 1 3 4

---

---

P<

P

P< **Conclusion**

**KEY WORDS**

---

	n	-
TM	n=	t P

---

1.3

t  $\bar{\pm}S$  n %

$\mu$

P

P

2

2.2

2.1

P

P

---

SE	CI	OR
----	----	----

---



---

---

2.3

P

---

---

Cl

P

$\mu$



;P

UNIVERSITY OF

3







---

1

1.1

1.2

1.2.1

1.2.2

---

---

§

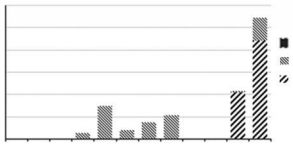
n

---

---

P

---



---

n=

P>

P>

P

P<

P>

n=

### Application value of MPV in the early diagnosis of bloodstream infection

#### ABSTRACT

#### Objective

#### Methods

n=

n=

#### Results

P

P>

P

P>

P<



---

1

1.1

---

---

---





---

• •

P

---

20221493  
053000

E mail yq811025@163.com

---

P<

P<

P> **Conclusion**

**KEY WORDS**

1.3  
1.3.1

t t n

P

2

2.1

P

%

1.3.2

n

P

2.2

1.3.3

2.3

P

2.4

P

1.3.4

P

3

1.4

-

n

$\mu$

t  
P

P

---

---

n

---

t  
p

---



n=

n=



---

**KEY WORDS**

1

---

P>

P<

2.5

- n

---

n=

n=

t'

P

---

P

---

2.3

P>

3

P

2.4

CI

---

0

5 L

G

---





1 1 2

EGFR

EGFR

P

P

3





P

P

P

P

**Conclusion**

EGFR

**KEY WORDS**

EGFR

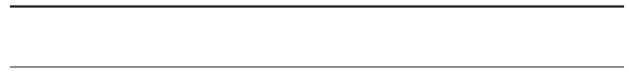
EGFR

EGFR

EGFR

P

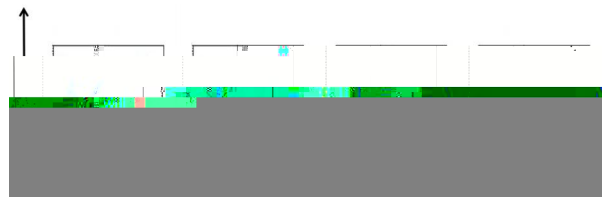
-



F  
P

2.4

P



1.3

-

P F n

2.3

2

2.1

P

P

3

2.2

P

EGFR

P

-

F P



• •

P

P

P<

**Diagnostic value of PG I PG II G17 PGR combined with Helicobacter pylori antibody in gastric cancer**

**ABSTRACT Objective**

**Methods**

**Results**

P<

P<

---

---

P< **Conclusion**

**KEY WORDS**

n -

---

n

---



---

Cl

---

t

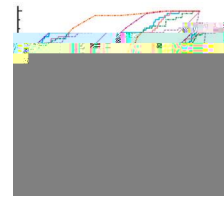
---

P

2.2

---

P<



P

P>

2.3

3

P

---

n

---

F

---

P

P<

P<

2.4

P<

---

n

---

- n

t

---

P





**Chromosome karyotype analysis of 41 cases of first trimester chorionic villus sampling in Wuhan Maternal and Child Healthcare Hospital**

**ABSTRACT** Objective

Methods

Results

Conclusion

**KEY WORDS**

---

2.2

1

1.1

---

n

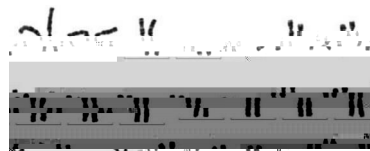
---

1.2

---

2

2.1



---

n

---



3

---



---

• •

1 2

1 2

3

1 2

---

P<

**Conclusion**

**KEY WORDS**

1.2  
1.2.1

1.2.2

$\mu$

$\mu$

1.2.3

1

1.1

n

P

2

2.1

v v

---

%

---

n=

n=

P

---

2.2

P

P

P

2.3

P

---

2.4

P

n

---

n=

n=

n=

n=

n=

n=

n=

P

---

---

%

---

n=

n=

n=

n=

P

---

---

2.5

& ' P



1 2 3 4 5

## Research progress of miR-208a in cardiovascular disease

### ABSTRACT

### KEY WORDS



---

3

3.1





## 杂志简介：

